

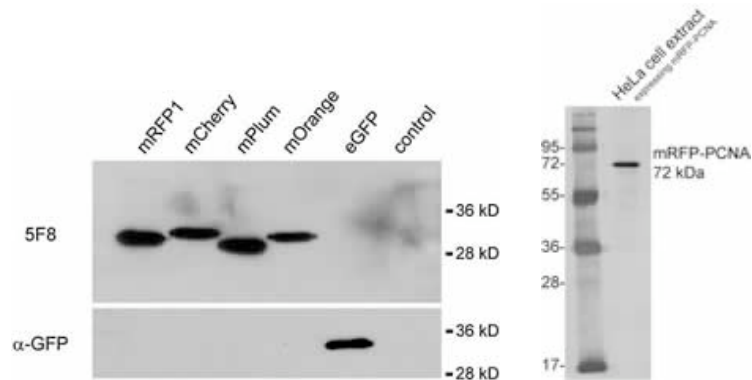
RFP antibody [5F8]

Description	Rat monoclonal [5F8] to Red Fluorescent Proteins
Product Type	Primary antibody
Specificity	tested on mRFP, mCherry, mPlum, mOrange, mRFPRuby, tdTomato, DsRed
Isotype	IgG2a
Application	Western blot: recommended starting concentration 1/1000 IF: recommended starting concentration 1/1000 IP: recommended starting volume 10 µl/IP Optimal dilutions/concentrations should be determined by the end user.
Relevance	Fluorescent proteins (FP) are powerful tools to study protein localization and dynamics in living cells. In addition to the prominent green fluorescent protein (GFP) from <i>Aequorea victoria</i> , a red fluorescent protein (DsRed) was discovered in the coral <i>Discosoma sp.</i> Mutagenesis of the red progenitor have resulted in several monomeric red FPs (mRFP1, mCherry, mOrange, mPlum, etc.) which became attractive tools for a number of applications.
Form	Liquid; hybridoma supernatant
Size	100 µl
Storage Buffer	Preservative: 0.01% Sodium Azide Material safety datasheet (MSDS) for this product: Sodium Azide MSDS
Storage instructions	Shipped at ambient temperature. Upon receipt store at +4°C. Stable for one year. Do not freeze.
References	Rottach, A <i>et al.</i> Generation and characterization of a rat monoclonal antibody specific for multiple red fluorescent proteins. Hybridoma (2008). PubMed: 18788935

Tested Applications

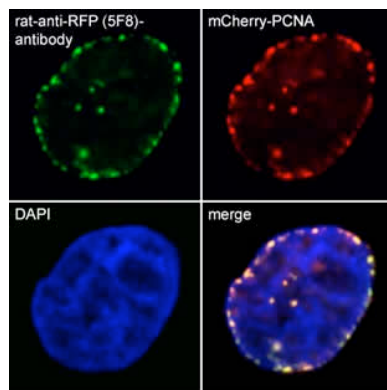
Western Blot:

primary antibody: 5F8 diluted 1/1000
secondary antibody: anti-rat Alexa 647



Immunofluorescence:

primary antibody: 5F8 diluted 1/1000
secondary antibody: anti-rat Alexa 488
fixation: 3.7 % PFA



HeLa cells stably expressing mCherry-PCNA

Only for research applications, not for diagnostic or therapeutic use.