

RFP antibody [6G6]

Description	Mouse monoclonal [6G6] to Red Fluorescent Proteins
Product Type	Primary antibody
Specificity	tested on mRFP, mCherry, mPlum, mOrange, mRFPruby, DsRed
Isotype	IgG2a
Application	Western blot: recommended starting concentration 1/1000

Optimal dilutions/concentrations should be determined by the end user.

Relevance Fluorescent proteins (FP) are powerful tools to study protein localization and dynamics in living cells. In addition to the prominent green fluorescent protein (GFP) from *Aequorea victoria*, a red fluorescent protein (DsRed) was discovered in the coral *Discosoma sp.* Mutagenesis of the red progenitor have resulted in several monomeric red FPs (mRFP1, mCherry, mOrange, mPlum, etc) which became attractive tools for a number of applications.

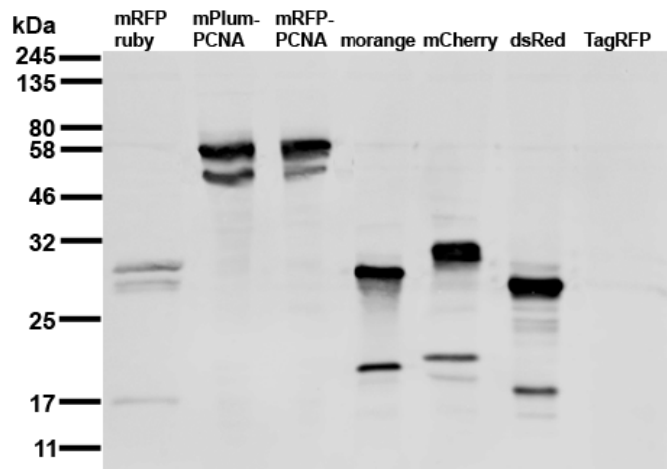
Form Liquid; hybridoma supernatant

Size 100 µl

Storage Buffer Preservative: 0.09% Sodium Azide
Material safety datasheet (MSDS) for this product:
[Sodium Azide MSDS](#)

Storage instructions Shipped at ambient room temperature. Upon receipt store at +4°C.
Stable for one year. Do not freeze.

Tested applications *Western blot:*



Cell extract of HEK cells transiently expressing different red fluorescent proteins.

primary antibody: 6G6 diluted 1/1000 incubation o.n. at 4°C

secondary antibody: 1/1000 anti-mouse-Alexa647

Only for research applications, not for diagnostic or therapeutic use.