

## RNA Pol II CTD Ser5 phosphorylation specific antibody [3E8]

<b>Relevance</b>	Changes of phosphorylation patterns of the carboxyl-terminal repeat domain (CTD) of RNA Pol II serves as flexible binding scaffold for a variety of proteins.
<b>Specificity</b>	Mammals, yeast
<b>Description</b>	Rat monoclonal [3E8] to RNA Polymerase II with phosphorylated Ser5 in the C-terminal domain.
<b>Product Type</b>	Primary antibody
<b>Isotype</b>	IgG2a
<b>Antigen</b>	Ova-YSPTS(P)PSYSPTSPS
<b>Form</b>	Liquid; hybridoma supernatant. The hybridoma was cultured in animal origin-free, chemically defined, protein-free medium. Tissue culture supernatant was concentrated by centrifugation using a 30 kDa exclusion membrane.
<b>Size</b>	1 ml; 5 ml
<b>Storage Buffer</b>	PBS, preservative: 0.09% Sodium Azide Material safety datasheet (MSDS) for this product: <a href="#">Sodium Azide MSDS</a>
<b>Storage instructions</b>	Shipped at ambient temperature. Upon receipt store at +4°C. Stable for one year. Do not freeze!
<b>Application</b>	Western blot: recommended starting concentration 1:10 ChIP: recommended starting volume 500 µl/ChIP The concentration of the antibody can vary. The optimal dilution should be determined by the end user. A titration from 1:5 up to 1:500 is recommended. IF: Not tested
<b>References</b>	Chapman RD, Heidemann M, Albert TK, Mailhammer R, Flatley A, Meisterernst M, Kremmer E, Eick D. Transcribing RNA polymerase II is phosphorylated at CTD residue serine-7. Science, 2007 Dec 14;318(5857):1780-2. ( <a href="#">PubMed</a> )

### Tested applications

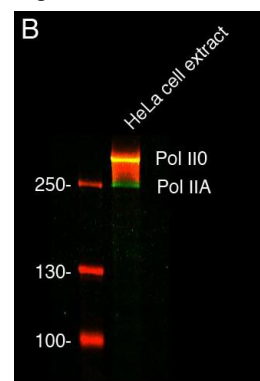
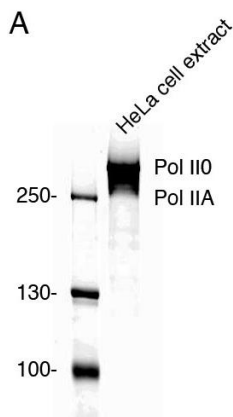
#### Immunoblot cell lysate

Primary antibody: RNA Pol II 3D8 1:10

Secondary antibody: anti-rat-Alexa680 or anti-rat-HRP

**A:** ECL detection of Ser5-P by antibody 3E8 in HeLa cell extracts.

**B:** Simultaneous detection of total RNA Pol II (green) and phosphorylated Ser5 variants (red, 3E8) - overlay appears orange. Note that hyperphosphorylated RNA Pol II runs at higher molecular weight.



*Only for research applications, not for diagnostic or therapeutic use.*