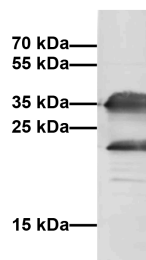
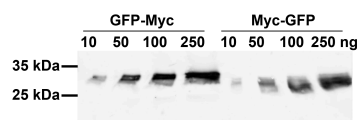


## c-Myc antibody [9E1]

<b>Description</b>	Rat monoclonal [9E1] to c-Myc
<b>Product Type</b>	Primary antibody
<b>Specificity</b>	The antibody recognizes an epitope located within the carboxy terminal sequence EQKLISEEDL (residues 410-419) of the product of the human oncogene c-myc. The antibody recognizes the c-Myc tag sequence at either the N- or the C-terminus of the fusion protein.
<b>Isotype</b>	IgG1
<b>Application</b>	Western blot: 1 µg/ml Immunoprecipitation: recommended starting concentration 4 µg/IP ELISA: not tested IF: not tested  Optimal dilutions/concentrations should be determined by the end user.
<b>Relevance</b>	Epitope tags are short peptide sequences of known epitopes, fused to recombinant proteins. Anti-tag antibodies serve as universal detection reagents for any tag containing protein produced by recombinant means. They are useful for specific visualization, immunoprecipitation or purification of recombinant proteins and protein complexes.
<b>Form</b>	Purified antibody
<b>Size</b>	100 µg
<b>Storage Buffer</b>	PBS Preservative: 0.09% Sodium Azide Material safety datasheet (MSDS) for this product: <a href="#">Sodium Azide MSDS</a>
<b>Storage instructions</b>	Shipped at ambient temperature. Upon receipt store at +4°C. Stable for one year. Do not freeze.
<b>Tested applications</b>	<i>Western blot:</i> primary antibody: 9E1 1 µg/ml, incubation at +4°C o.n. secondary antibody: 1/2000 anti rat Alexa647



HEK293T cell extract expressing mCherry HA-Myc-His  
primary antibody: 9E1 1 µg/ml  
secondary antibody: anti rat Alexa647 1:2000



Sensitivity of rat Myc antibody 9E1 goes down to 10 ng of purified GFP-Myc and Myc-GFP protein.  
primary antibody: 9E1 1 µg/ml  
secondary antibody: anti rat Alexa647 1:2000

*Only for research applications, not for diagnostic or therapeutic use.*