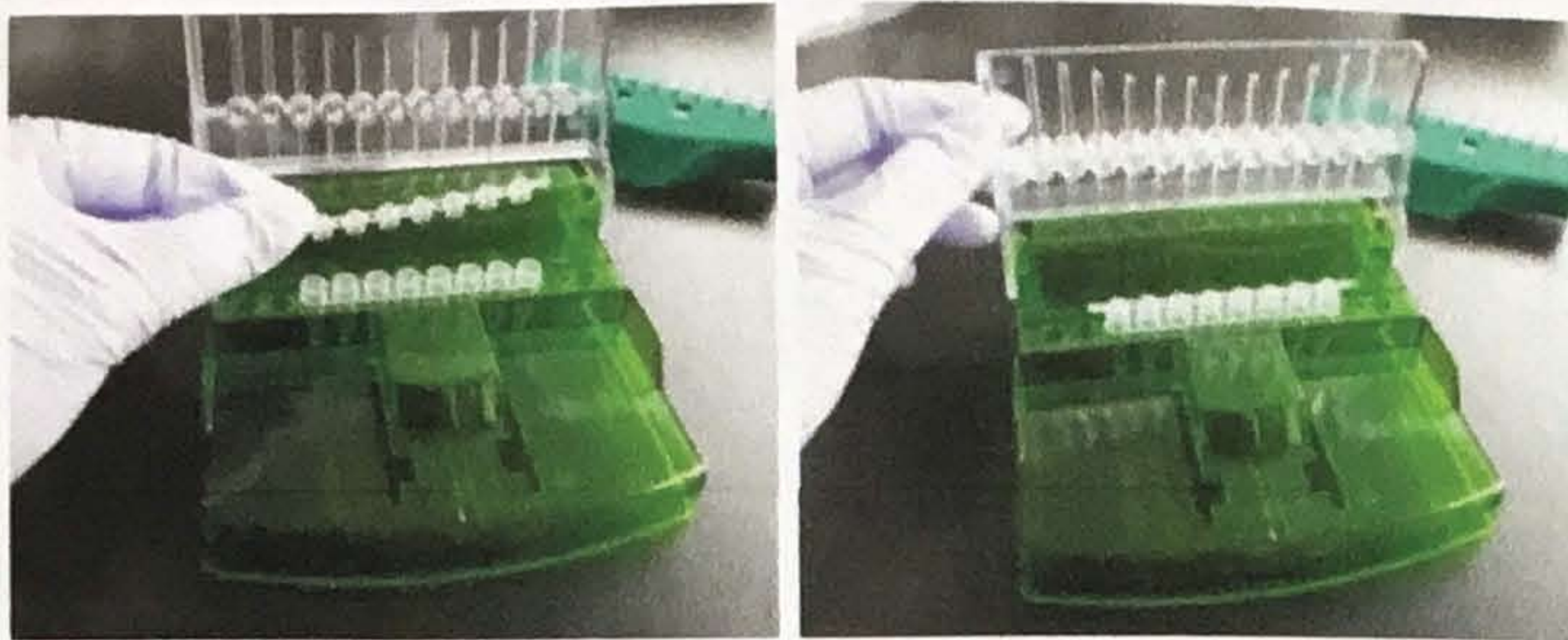


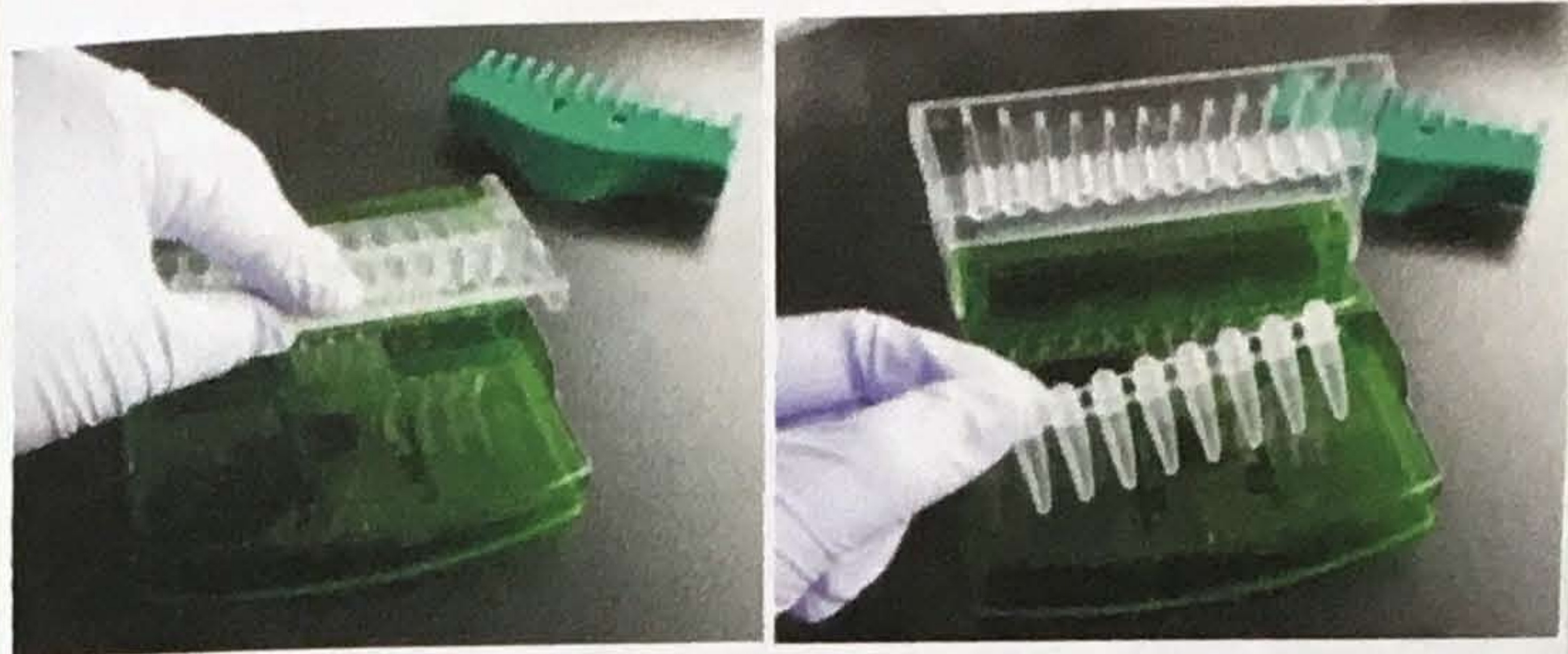
Instruction

<When used as capper>

1.) Place the 8-strip tubes first into wells of the CapEasy body and set the cap strips on the top of the 8-strip tubes. It is not necessary to fix the cap strip tightly but place it into correct position.

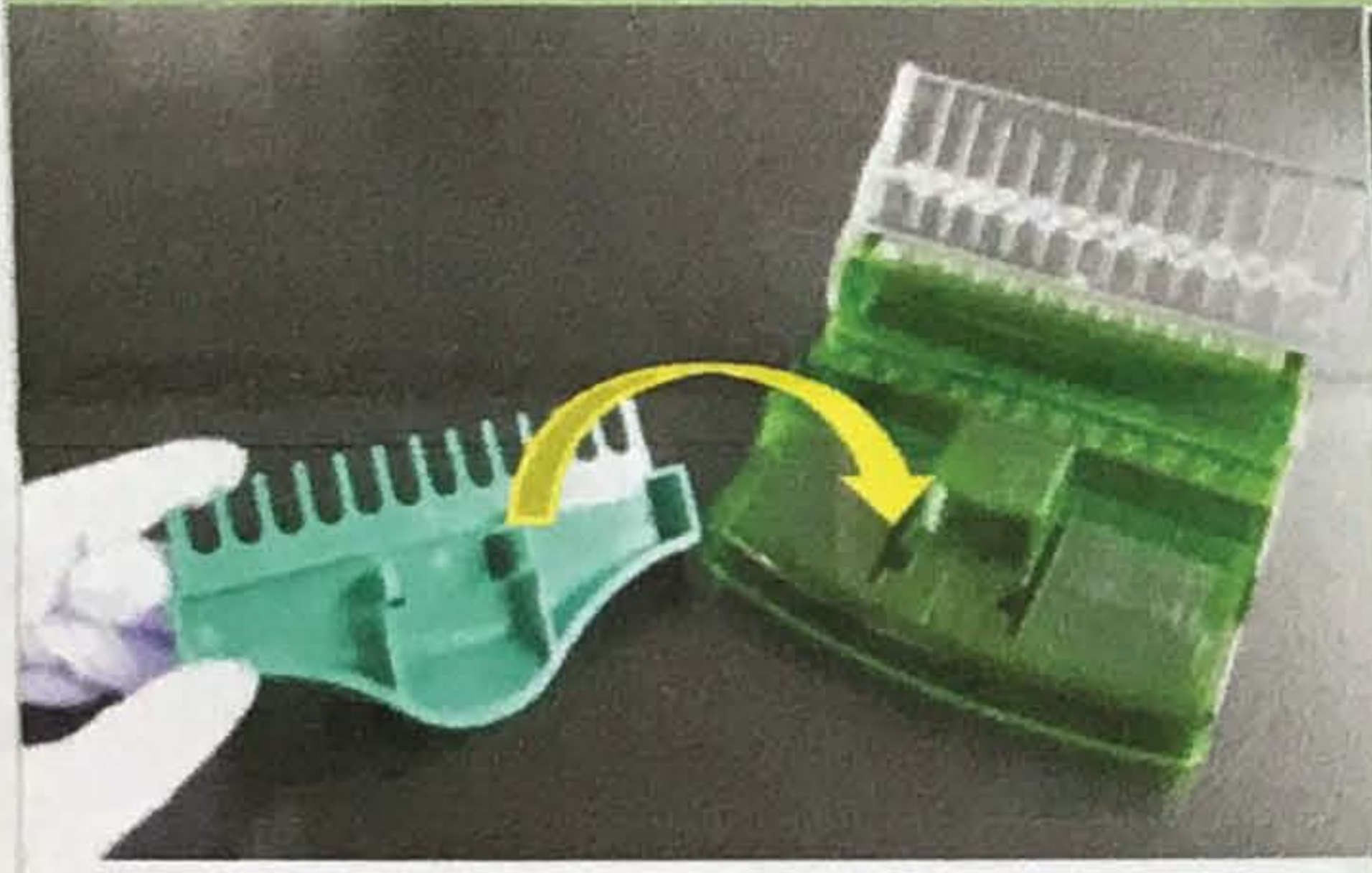


2.) Lower the lid of the body and press it with a uniformly disturbed force along its top. That's it.

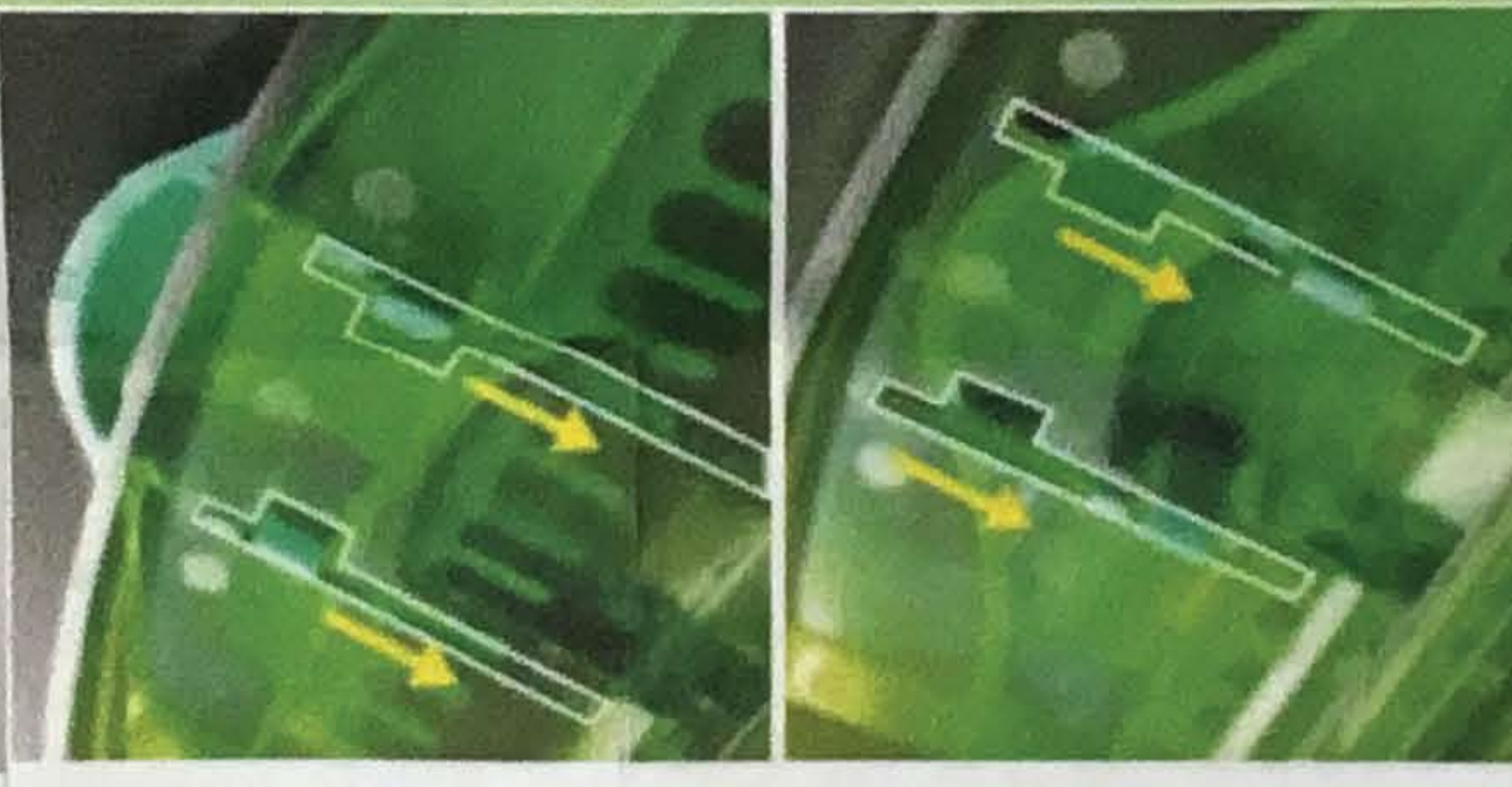


<When used as decapper>

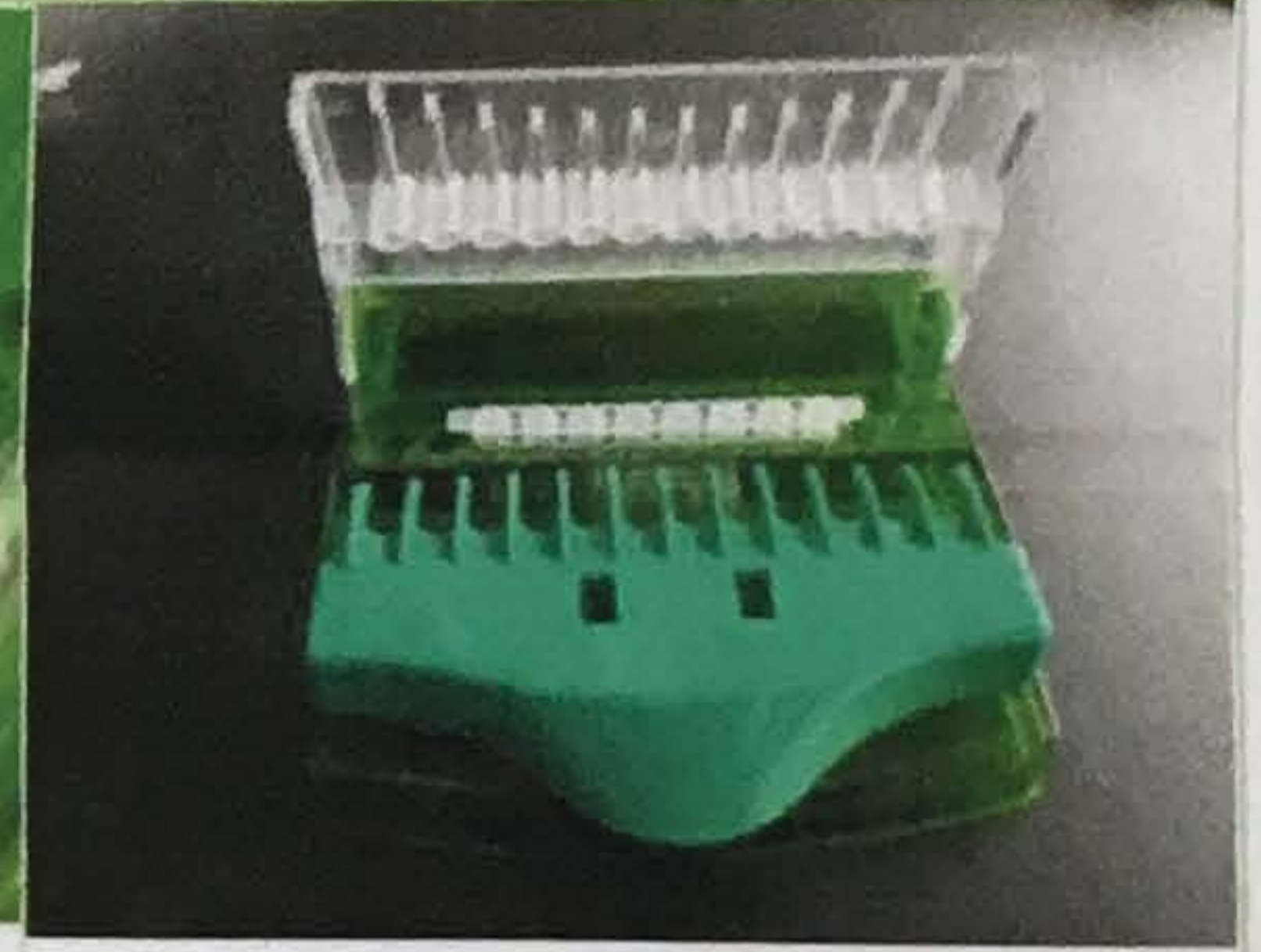
1.) Open the lid of the CapEasy body and insert the CapEasy comb into the slides.



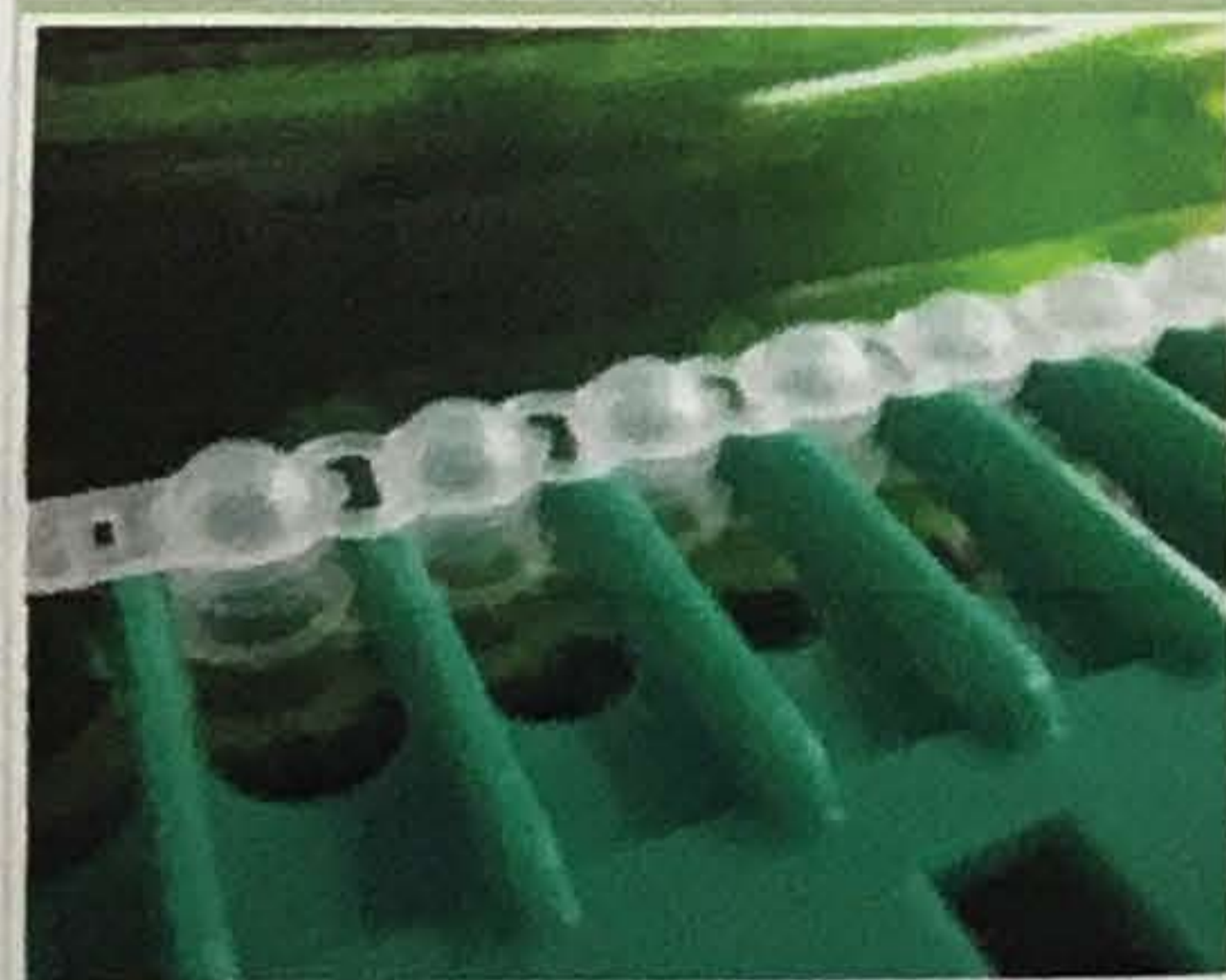
2.) Slide the CapEasy comb forward along the slides. The picture describes how it looks from underneath.



3.) Set the closed 8-strip PRC tubes into the wells of the CapEasy body.



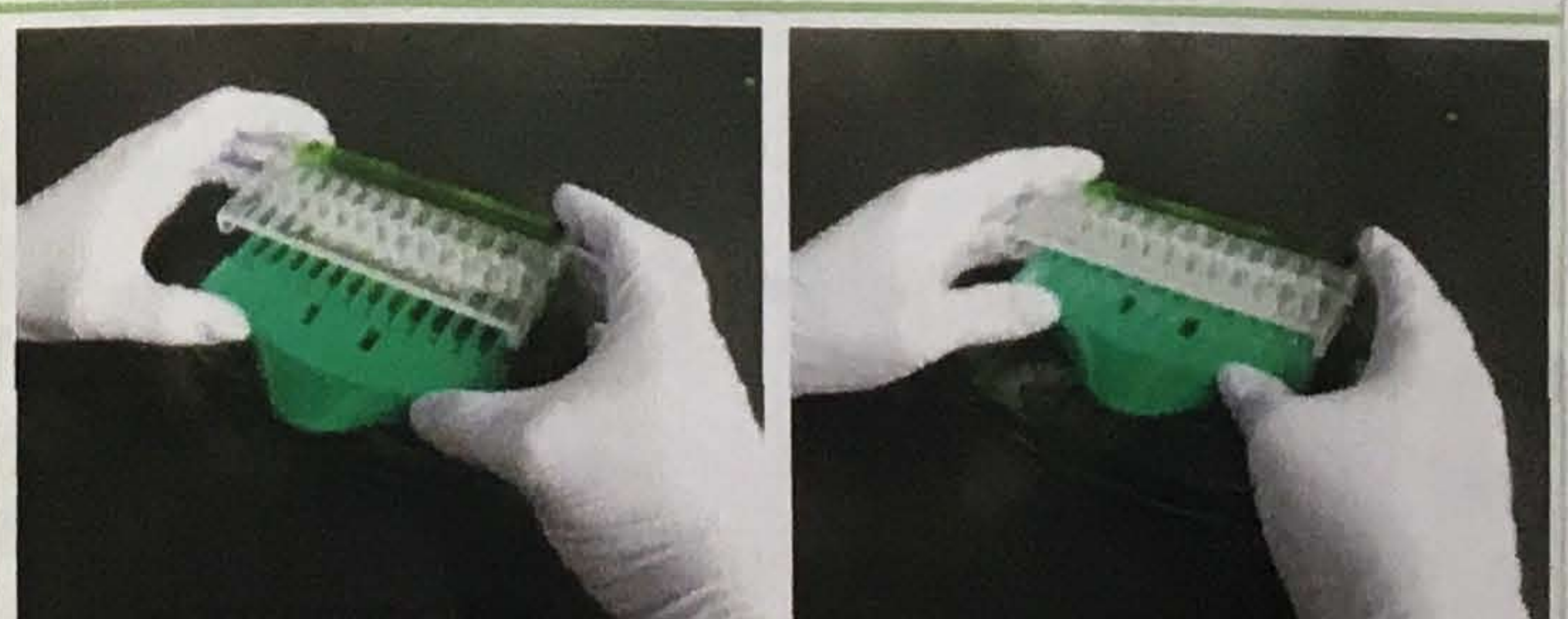
4.) Move the CapEasy comb gently forward till it touches the 8-strip PCR tubes.



5.) Close the lid of the CapEasy body lightly in order to prevent that the cap strip will hurtle.



6.) Grip the CapEasy body with both hands, hold the lid lightly down and press the CapEasy comb with the thumbs forward.



7.) Open the lid.



8.) Remove the cap strip.

