



INSTALLATION GUIDE

FAS-Digi PRO



NIPPON Genetics EUROPE
Binsfelder Straße 77 | 52351 Düren | Germany
www.nipppongenetics.eu

Tel.: +49 (0) 2421 55 496 0
Fax: +49 (0) 2421 55 496 11
info@nippongenetics.eu
support@nippongenetics.eu

Content

Components of the FAS-Digi PRO.....	3
Setting up the FAS-Digi PRO	4
Assembling the camera holder.....	4
Connecting the Cables.....	7
Connecting the camera to a PC.....	8
Preparation:.....	8
Starting the software.....	8



Components of the FAS-Digi PRO

- Blue/Green LED XL-Transilluminator
- Darkbox
- Amber goggles (in the Darkbox)
- Camera holder (in the Darkbox)
- Cables:
 - a. Battery adapter for the camera (in the camera box)
 - b. USB-Cable to connect the camera to the PC (in the camera box)
 - c. Power cable 1: From a power socket to the Darkbox (in the illuminator box)
 - d. Power cable 2: From the Darkbox to the Blue/Green LED XL-Transilluminator (in the Darkbox)
- Camera:
 - a. Attached to the aluminum adapter (Please do not remove the aluminum adapter)
 - b. Orange fluorescence filter attached to the lens



Setting up the FAS-Digi PRO

Place the unit on a level surface with minimal chance of dropping.

Assembling the camera holder

The camera holder prevents the camera from turning when rotating the zoom ring using the aluminum adapter and is fixed by two screws to the Darkbox and one tripod screw to the camera. The position of the camera holder must be adjusted according to the camera:

1. Place the camera with its aluminum adapter in its final position, by adding it to the hole in the top part of the Darkbox.
2. Add the Battery adaptor to the camera. Please note that only one direction is possible.



3. Close the battery compartment completely. Please put the cable in the cable channel. Please note: the camera will not turn on if the battery compartment is not completely closed.

Cable channel



- Align the camera, so that the image of the position is straight. The control buttons should be facing toward the door of the Darkbox.
- Loose the tripod screw from the camera. Please be careful not to lose the spacer. The spacer is added between the camera and the camera holder.

Tripod screw



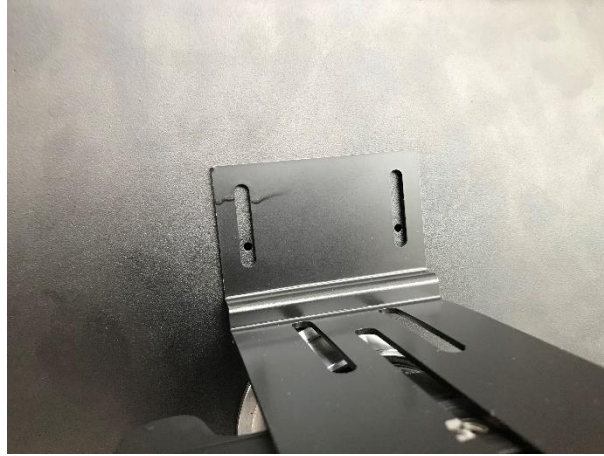
Spacer



- Fix the *camera holder* on the camera using the tripod screw in the following order: Screw→Spacer→Camera holder→Spacer→Camera.



7. Align the *camera holder* holes with the 2 small holes in the Darkbox



8. Use the screws fixed on the box. You will need a 6mm head for the nut and a hexagon socket screw (a.k.a. Allen) key.

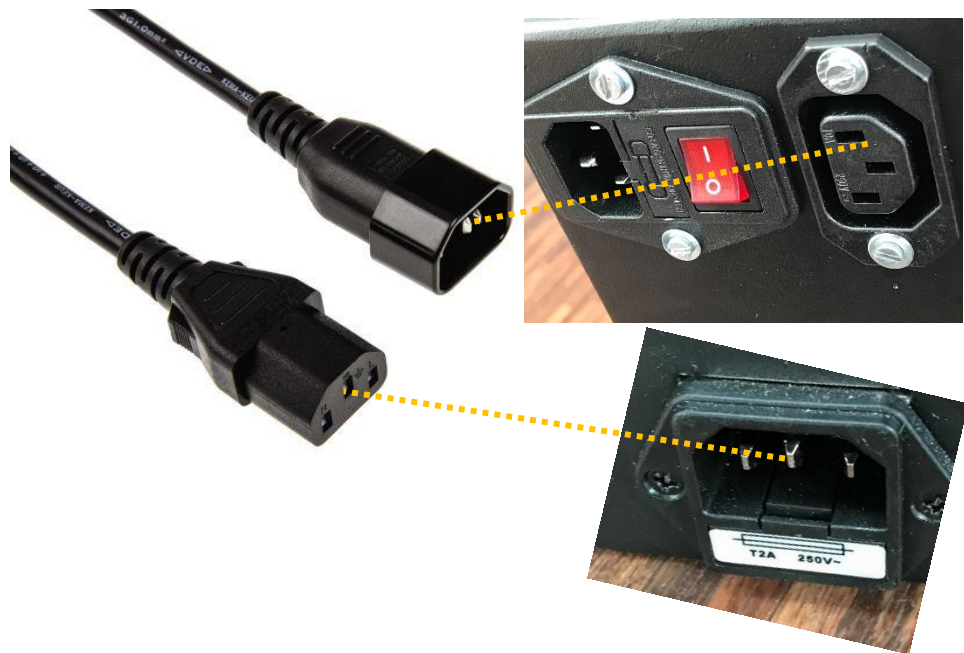


The Darkbox connected with the camera is now ready and can be placed on top of the transilluminator. The next step will explain how to connect the cables.

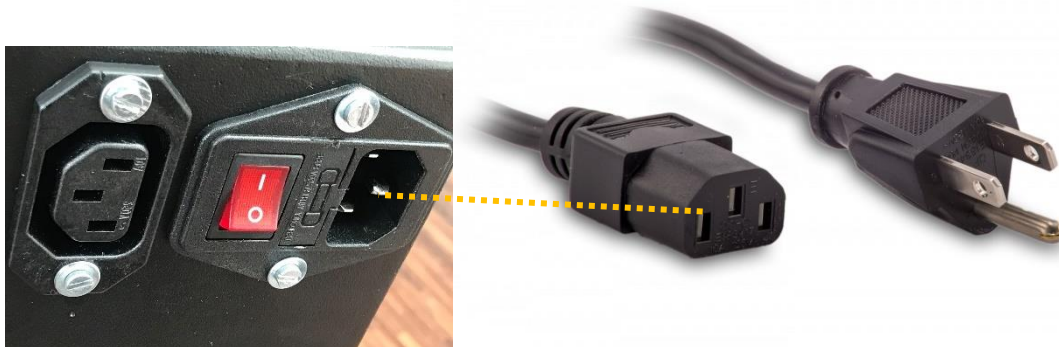
Connecting the Cables

The FAS-Digi PRO was designed to have only one power supply. The transilluminator and the camera receive their electrical power from the Darkbox. Please connect the cables using the following order:

9. Connect the B/G LED XL-Transilluminator to the Darkbox using the male to female power plug:



10. Add the power lead to the power socket and to the Darkbox.



11. Switch on the red switch on the back part of the Darkbox.

The FAS-Digi PRO is now powered up. The transilluminator should switch on, as soon as the switch in the front is used. The next step explains how the camera is connected to a PC.

Connecting the camera to a PC

The FAS-Digi PRO is powered up and can be used without a software. Here, we will explain how to connect the FAS-Digi PRO GelDocSystem to a Windows 10 PC to use the NIPPON Genetics Camera Studio software.

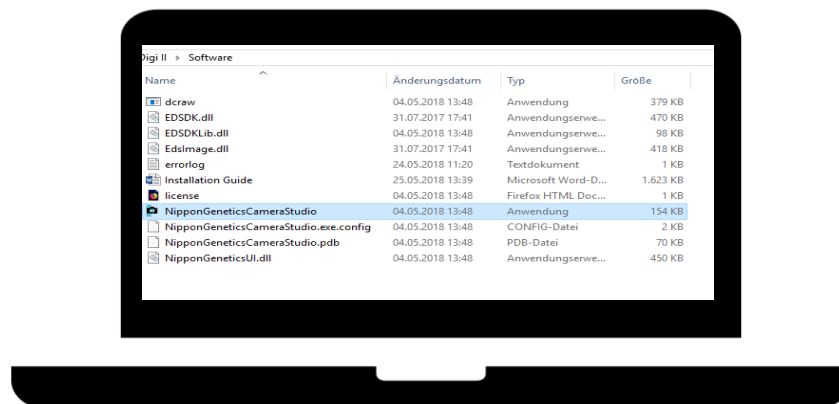
Preparation:

- Check that the Autofocus and the image stabilization are turned off.
- Copy the FAS-Digi PRO Folder to the Desktop of a Microsoft Windows 10 PC.
- Connect the camera to the PC using the USB Cable found in the Camera box. The USB port is on the left side of the camera.
- Set the camera to manual mode by turning the mode dial to M.
- Switch the camera on.



Starting the software

1. Start the NIPPON Genetics Camera Studio software:



Please note if a blue SmartScreen appears: select More info and chose the option run anyway.

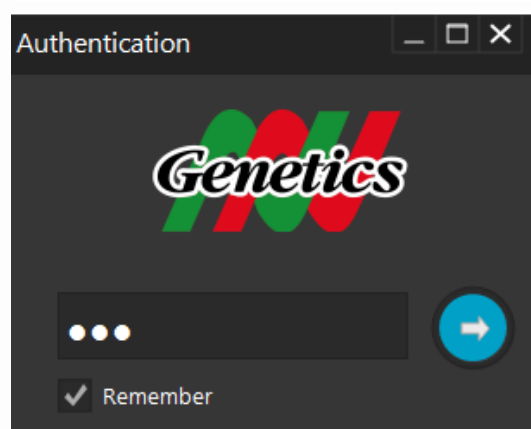


This blue SmartScreen will only appear when the NIPPON Genetics Camera Studio is launched for the first time.

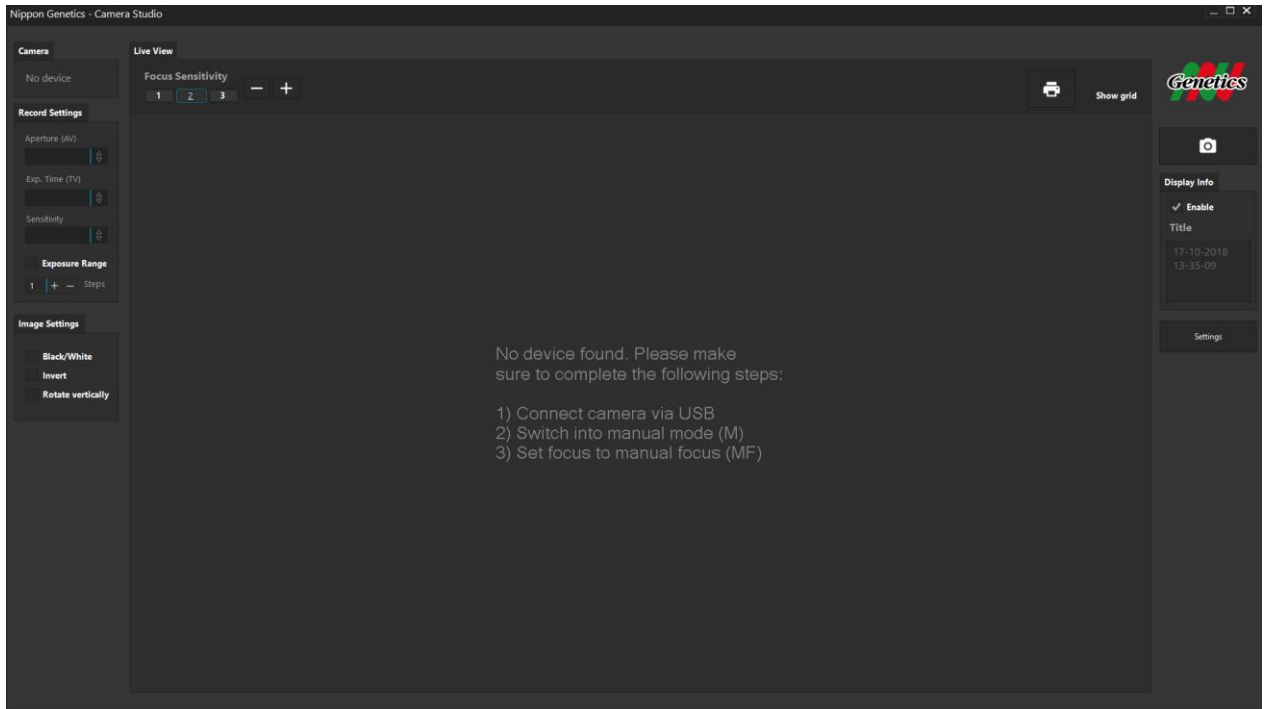
2. Log in

The NIPPON Genetics Camera Studio Software is password protected to avoid unauthorized people to have access to the gel documentation system. The password to enter the software is

NgE



3. The software will open.



You completed the installation of the FAS-Digi PRO. Please continue with the IQ/OQ/PQ protocol.

WELL DONE!



NIPPON Genetics EUROPE
Binsfelder Straße 77 | 52351 Düren | Germany
www.nippongenetics.eu

Tel.: +49 (0) 2421 55 496 0
Fax: +49 (0) 2421 55 496 11
info@nippongenetics.eu
support@nippongenetics.eu