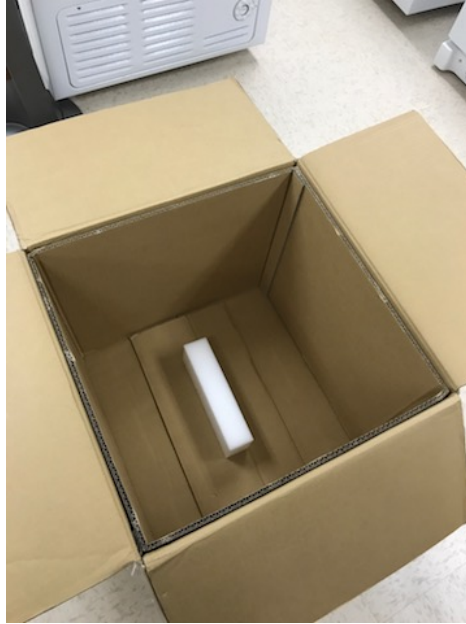


NEPA21 Packing Instructions

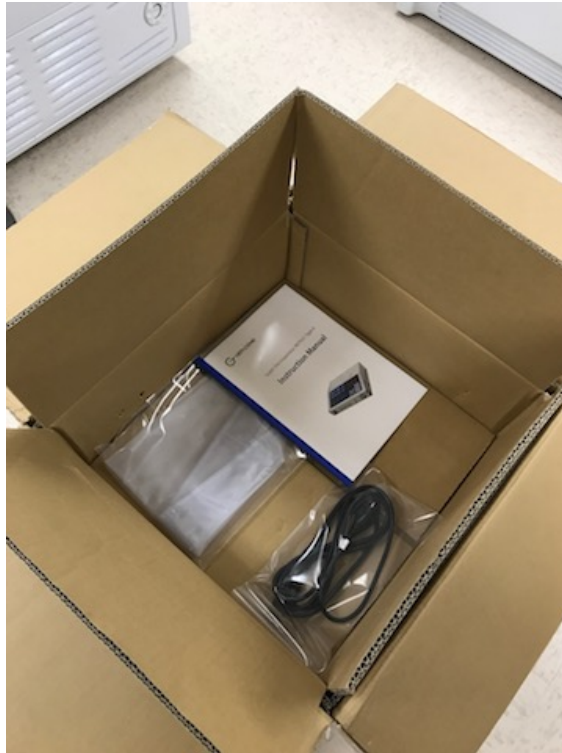
1. Make sure the center foam protector is in bottom of box (it should go vertically from the top of the NEPA21 toward the bottom)



2. Place foam protectors on sides of NEPA21 system and place into box



3. Place accessory box on top (inside the outer box) and place the following into the accessory box:
 - a. User manual
 - b. Power cable
 - c. Any other cables and electrodes provided



4. Close inner box (no need to tape or seal)
5. Close outer box and use packing tape to keep it sealed shut
6. Use FedEx return label provided to you by taping it onto the top of the box (or using a FedEx label envelope if you have access to one)
7. Take the system to your regular FedEx Ground Pickup location

Any questions? Please call us at 603-570-4248 or email info@bulldog-bio.com