

FastGene[®] 50bp DNA Ladder

Cat. No. MWD50
Size: 56 µg / 500 µl

Description

A unique combination of PCR products and a number of proprietary plasmids digested with appropriate restriction enzymes to yield 17 fragments, suitable for use as molecular weight standards for agarose gel electrophoresis. The DNA includes fragments ranging from 50-1,500 base pairs. The 200, 500 and 1200 base pair bands have increased intensity to serve as reference points. The approximate mass of DNA in each band is provided (0.56 µg a load) for approximating the mass of DNA in comparably intense samples of similar size.

Source

PCR products and double-stranded DNA digested with appropriate restriction enzymes, are phenol extracted and equilibrated to 10 mM Tris-HCl (pH 8.0) and 10mM EDTA.

Range: 50-1,500 bp

Number of bands: 17

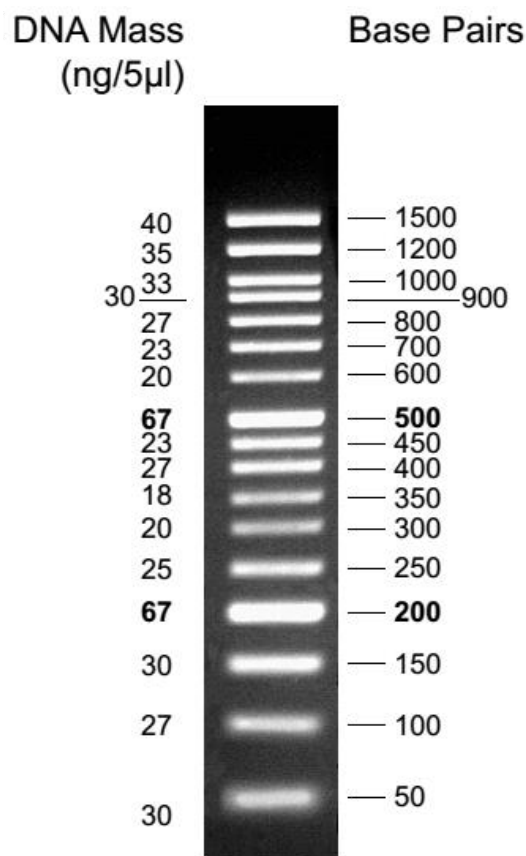
Concentration: 112 µg / ml

Package: 56 µg / 500 µl

Recommended Load: 5 µl / well
Contains Orange G as a tracking dye.

Storage

Store at 4°C for 12 months
Store at -20°C for 24 months



2% TAE agarose gel